

Headteacher Comment

Welcome back to a new summer term at Emneth Nursery School. I hope you all enjoyed a restful break and had a lovely Easter, whether you spent it with family, enjoying springtime adventures, or simply taking time to relax. It has been wonderful to see the children return full of enthusiasm and ready for the exciting weeks ahead.

A special welcome to our new families joining us this term. We are delighted to have you as part of our nursery community and look forward to getting to know you and your children. Please know that our team is here to support you every step of the way as you settle in.

The summer term is one of our favourite times of the year. With lighter days and warmer weather arriving, we will be spending even more time outdoors—exploring, discovering, and learning through rich, hands-on experiences. Our staff team is excited to nurture the children's curiosity, independence, and confidence as they continue their learning journey with us.

Thank you, as always, for your continued support. Working in partnership with our families makes such a positive difference, and we truly appreciate the trust you place in us.

Here's to a happy, sunny, and exciting term ahead.

Key Dates for the Spring Term

Summer 1st half term

Reopen on Tuesday 14th April

Closed to all 4th May for bank holiday

Closes Friday 22nd May for half term holiday

Half term Monday 25th May to Friday 29th

(Daycare remains open except for 25th May due to the bank holiday)

Summer 2nd half term

Reopen on Monday 1st June 2026

Closes Friday 17th July 2026

Summer holiday starts Monday 20th July 2026
(DAYCARE REMAINS OPEN UNTIL 19th AUGUST
AND CLOSURES FROM 20th AUGUST 2026)

Millie the School Dog - Update

We are delighted to share that Millie has settled in beautifully to her new environment at the nursery. She is becoming much more familiar with the daily sounds, routines, and movements around the school.

Over the next few weeks, we will begin teaching the children how to approach Millie safely and respectfully, helping them understand her boundaries and how to interact with her calmly. This will ensure that both the children and Millie feel comfortable, happy, and secure.

We will let families know as soon as we are ready to begin introducing the children to Millie directly. Thank you for your support as she continues her gentle, positive transition into school life.



Reminder about Nursery Fees

Just a reminder that our nursery fees increased from 1st April. See new rates below

	Previous Fees (per hour)	Fees from 1 st April 2026 (per hour)
0-2's	£6.50	£6.92
2-3's	£6.10	£6.50
3-4's	£5.90	£6.28

Invoicing will continue to be done for the term but you have until the end of the term to pay the final balance and you can choose how to do that.

Healthy Lunch box Initiative

This term, we will be having a strong focus on healthy lunch boxes and appropriate portion sizes across the nursery. We understand that preparing a balanced, appealing lunch every day can be challenging, and we want to make this easier for families while supporting the health and wellbeing of all our children.

To help with this, we have begun giving out free compartment lunch boxes. These are designed to:

- Encourage balanced portions
- Reduce unnecessary packaging
- Make it easier for children to see and enjoy a variety of foods

If your child has not yet received a lunch box, please don't worry — we will continue to distribute them over the coming weeks. All new children joining the nursery will also receive one when they start.

We will also be providing clear guidance on what a balanced lunch might look like, including:

- Helpful portion size suggestions
- Example lunch ideas
- Ongoing support from staff if you have questions or would like advice

Our aim is to work in partnership with parents to help children develop healthy relationships with food, build independence, and enjoy eating well.

Thank you for your support with this important initiative. Together, we can make a real difference to our children's health, wellbeing, and understanding of sustainability. Let's make healthy eating simple, positive, and enjoyable for everyone.



Raise funds for us for FREE

with  easyfundraising



Join as our supporter today at:

www.easyfundraising.org.uk/support-a-good-cause

Just search for:

Emneth Nursery School, Wisbech

8,000+ retailers will donate to us whenever you shop with them



JOHN
LEWIS



Plus, you'll get...



Exclusive retailer offers



Competitions



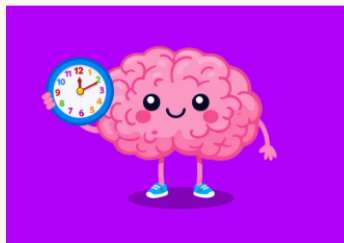
A warm feeling inside!

Over
£60m
raised for UK good causes

£0
extra cost to anyone

Screen Time Guidance for Under 5's

The Government have released guidance on screen time for under 5's. For more information, please visit [Baby and toddler screen time guidance - Best Start in Life](#)



How much screen time should my child have?

Limit total screen time for young children, wherever possible.

- **Under 2 years:** Avoid screen time other than for shared activities with family that encourage bonding, interaction and conversation.
- **2-5 years:** Try to keep it to 1 hour a day. Less if possible.

Family Support

There is a wide range of support, advice, and guidance available for families, covering many different topics.

You can contact the Early Childhood and Family Service

They can offer 1:1 support, group activities and course for parents/carers

To ask for extra help, call 0344 800 8020, email ecfs-families@actionforchildren.org.uk
<https://www.norfolk.gov.uk/.../Get-extra-support-from...>

You can contact Just One Norfolk

They can support with any questions or concerns about your child's health, wellbeing or development.

Call 03003000123 <https://www.justonenorfolk.nhs.uk/>

Family Hub

There are seven family hub buildings across Norfolk. Parents and carers can drop into these centres for advice and support - you don't need an appointment to visit.

<https://www.justonenorfolk.nhs.uk/famil.../family-hub-sites/>